



**Th. WORTELBOER B.V.**

SLUISWEG 9  
NL - 6582 AG HEUMEN  
HOLLAND  
PHONE +31 24 358 6514

[www.wortelboer.ws](http://www.wortelboer.ws)

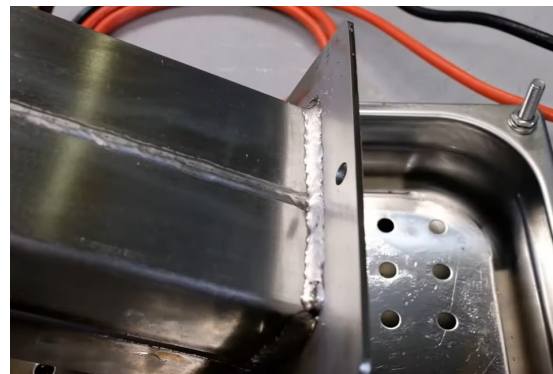
E-mail : [info@wortelboer.ws](mailto:info@wortelboer.ws)

## **NITTY GRITTY X-BRUSH CLEANING & MARKING SYSTEMS**

Cleaning / polishing / pickling / passivate and / or marking  
stainless steel



- for INOX
- innovative design
- Safe
- fast and easy



For

- heat exchanger manufacturing
- offshore constructions
- Apparatus manufacture
- equipment constructions
- shipbuilding
- machine construction
- pipeline construction

# Technical specifications:



Model	X-BRUSH BASIC	X-BRUSH MINI	X-BRUSH
Cleaning / Pickling	AC	AC	AC
Polishing	-	DC	DC
Marking black *	AC - black	AC - black	AC - black
Marking white *	-	DC - white	DC - white
Power	360 W.	1500 W.	2500 W.
(connection) power	230 V / 50- 60 Hz	230 V / 50- 60 Hz	230 V / 50- 60 Hz
Current output	Max. 30 A.	Max. 50 A.	Max. 100 A.
Dimensions	240 x 170 x 330 mm.	240 x 170 x 410 mm.	240 x 170 x 410 mm.
Weight	6,0 Kgs.	7,0 Kgs.	8,5 Kgs.
Ground cable length	3 meter	3 meter	3 meter
Torch cable length	4 meter	4 meter	4 meter
Torch sockets	1	2	2
Brush / torch	Dip & Work Ø 10mm.	Dip & Work Ø 12mm.	Dip & Work Ø 12mm.

\* With optional marking kit.

# X-BRUSH

## Dip&Work Professional Pickling System

by  
*nitty gritty*  
MAKE IT SHINE